

corruption
watch



UKUQONDA INKOHLAKALO EHLOBENE NOKUGUQUGUQUKA KWESIMO SEZULU:

UMHLAHLANDLELA WOMPHEKATHI



CW ON SPOTIFY



CW ON APPLE PODCASTS



SURPLUS
PEOPLE
PROJECT



GOLDCO
UNIFY THE COMMUNITY

Le pamphlet iyisifundo solwazi esisiza umphakathi ukuqonda izindaba ezinkulu zenkohlakalo ezihlobene nengqinamba yokuguquguquka kwesimo sezulu. Nakuba yakhelwe iNingizimu Afrika, okuqukethwe kwayo kuyasebenza emhlabeni jikelele.

Iphamphlet ichaza ukuthi kuyini ukuguquguquka kwesimo sezulu okuhlobene nenkohlakalo, ikhombisa izinhlobo zalo ezahlukene nezindawo ezivame ukuthinteka, ibheke umthelela kulolu hlobo lokulwa nokuguquka kwesimo sezulu nobulungiswa bezemvelo, futhi inikeze izibonelo ezenzakalayo ezizosiza umphakathi ukubona izindlela zenkohlakalo ezisemkhakheni wokuguquka kwesimo sezulu.

1. Kuyini ukuguquguquka kwesimo sezulu okuhlobene nenkohlakalo?

Inkohlakalo ehlobene nokuguquka kwesimo sezulu ibhekisela ekusetshenzisweni kabi kwamandla, ukwethenjwa komphakathi, noma izinsiza zomphakathi ukuze kutholakale inzuzo yomuntu siqu noma eyezopolitiki esimweni sokuzama ukwehlisa imiphumela yokuguquka kwesimo sezulu noma ukuzivumelanisa nayo.

Lokhu kufaka phakathi ukuphathwa kabi noma ukuntshontshwa kwezimali ezihloselwe izinhlelo zokuguquka kwesimo sezulu, ukuguqulwa kwezinhlelo nezinqubomgomo zemvelo, nokungenelela okungafanele ezinqubweni ezenzelwe ukulwa nokuguquka kwesimo sezulu.



Le nqubo ibambezela inqubekela phambili ezinhlelweni ezifana:

- Namandla avuselekayo (renewable energy),
- Ukuqina ezinhlekeleleni zemvelo (disaster resilience),
- Ukuvikelwa kwemvelo (conservation),
- Nentuthuko elinganayo.

Kanti kulimaza kakhulu abantu abathinteka kalula nemvelo ebuthakathaka.

2. Inkohlakalo ehlobene nokuguquka kwesimo sezulu yenzeka kanjani?

Imvamisa, inkohlakalo kulo mkhakha ihlela izikhulu zikahulumeni, abasebenzi bombuso, izinkampani ezinkulu, nabanye abathile abasebenzisa izikhundla zabo ukuze bathole ukufinyelela ezinsizeni ezihlobene nesimo sezulu.

Izibonelo zihlanganisa:

- Ukuphambukisa izimali zosizo lwezinhlekelele ezazihloselwe imiphakathi ebhekene nezikhukhula, isomiso noma imililo yasendle.
- Ukunikezwa kwenkontileka ezinkampanini ezingafanelekile ngenxa yezinkokhelo ezingekho emthethweni (izikhwama zenkohlakalo).
- Ukuphazamisa noma ukugwema imithetho yezemvelo ngenxa yezinzuzo zomuntu siqu noma zebhizinisi.
- Ukuqamba amanga noma ukukhulisa imiphumela yezinhlelo zemvelo ukuze kutholakale uxhaso lukahulumeni noma ukutshalwa kwezimali.



3. Izinhlobo ezivamile zezenzo zenkohlakalo ezihlobene nokuguquguquka Kwesimo Sezulu

Inkohlakalo emkhakheni wokuguquka kwesimo sezulu ithatha izinhlobo ezahlukene kuye ngesimo sezepolitiki, ezentlalo nezomthetho. Ngokwe-Corruption Watch, izinhlobo ezivamile kakhulu eNingizimu Afrika zihlanganisa:

- **Izinkokhelo ezingekho emthethweni**- (bribery)kanyenokucindezelwa (extortion) - lokhu kwenzeka lapho abantu noma amabhizinisi enikeza noma ephoqeelwa ukuba akhokhe imali ukuze athole izinzuzo - ngokuvamile ukuze kugwemeke imithetho yezemvelo. Ngokwesibonelo, izinkampani zingakhokha iziphathimandla ukuze zivune imayini noma zigawule izihlahla ngokungekho emthethweni.
- **Ukungahleleki kwezinqubo zokuthengwa kwezimpahla** (procurement irregularities) - lokhu kufaka ukuphazamisa izinqubo zokubhida noma ukunikwa kwenkontileka - ngokuvamile ngokuvuna izinkampani ezizimisele ukukhokha izinkokhelo ezingekho emthethweni. Ezinhllelweni zokuguquka kwesimo sezulu, njengokwakhiwa kwezingqalasizinda zamandla avuselelekayo, lokhu kungaholela ekukhethweni kwenkampani engafanelekile, okubangela ukuthi iprojekthi yehluleke noma ingaqediwe kahle.



- **Ukusetshenziswa kabi kwezinsiza** (misappropriation of resources): kufaka ukuntshontshwa, ukugwazeka noma ukusebenzisa kabi izimali, abasebenzi noma imishini okuhloselwe ngayo izinhlelo ezihlobene nokuguquka kwesimo sezulu, njengezinhlelo zamandla aluhlaza noma uhlelo lokuguqula umnotho ngendlela efanele. Lokhu kushiya imiphakathi ingatholi usizo olubalulekile.
- **Ukuzenzisa** (greenwashing): kusho ukukhishwa kolwazi olungelona iqiniso noma ukukhohlisa mayelana nezenzo zemvelo zenkampani noma zikahulumeni. Izimangalo ezingamanga zingasetshenziswa ukuheha abatshalizimali, ukuthola izibonelelo zikahulumeni noma ukwesekwa umphakathi – nakuba kungekho nqubekela phambili yangempela.

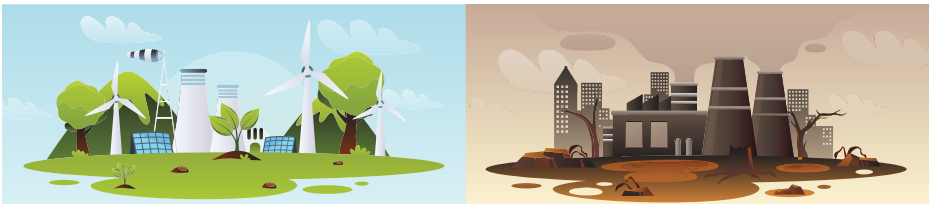


- **Ukulawulwa kwezepolitiki** (political capture): lokhu kwenzeka uma izinkampani ezinamandla zibe nomthelela ongafanele ezinqumweni zenqubomgomo, ezinqubweni zokulawula noma emthethweni. Ngokwesibonelo, izinkampani zamafutha ezimbiwa phansi zingabamba iqhaza elikhulu ekuhlelweni kwemithetho ezokwesekwa inzuzo ngaphandle kokunaka imiphumela emvelweni.

4. Imiphumela Yenkohlakalo Ehlobene Nokuguquguquka Kwesimo Sezulu

Imiphumela yale nqubo inzima futhi ixhumene kakhulu, futhi isongela imvelo kanye nobulungiswa emphakathini:

- **Ukubambezeleka kwezenzo zesimo sezulu**- izinyatheloezibalulekile ezifana nokusetshenziswa kwamandla avuselelekayo, ukuvikelwa kwemvelo, kanye nokulungela izinhlekelele zemvelo zibambezeleka noma ziphazamiseka.
- **Ukuwohloka kwemvelo** - kukhuphuka ukugawulwa kwezihlahla, ukungcoliswa kwamanzi, ukonakala komhlaba, kanye nokudotshwa kwezinsiza zemvelo ngokungekho emthethweni - konke lokhu kulimaza izilwane nezitshalo.
- **Ingqalasizinda engalungile** - izindlela zokwakha ezingekho ezingeni ngenxa yenkohlakalo ziholeda ezingqalasizindeneni ezingaqediwe noma ezingasizi abantu ngesikhathi sezinhlekelele ezifana nezikhukhula noma amagagasi okushisa.
- **Ukusetshenziswa kabi kwezimali** - imali ebihlosiwe ukusiza imiphakathi ebuthakathaka - njengabalimi abancane, abantu abahlala ogwini noma ezindaweni ezingakahleleki - iyebiwe noma isetshenziswe ngendlela engekho emthethweni.
- **Ukulahlekelwa ukwethenjwa ngabatshalizimali** - abatshalizimali abangasekho bafuna ukubamba iqhaza ezinhlelweni zesimo sezulu ngenxa yokwesaba inkohlakalo - okuvimba imali entsha kanye nokuqamba okusha.
- **Ukulahlekelwaukwethenjwakomphakathi**-umahlumeni huka ukuhlangabezana nezithembiso zesimo sezulu ngenxa yenkohlakalo, umphakathi uphelelwa ukhohlo futhi awubambisani, kuncipha ukuqapha kukahlumeni.
- **Ukwehluleka ukufinyelela imigomo yomhlaba jikelele** - inkohlakalo ibeka engozini imizamo yokufinyelela izivumelwano zomhlaba njengesizivumelwano saseParis - okuholela ekwenyukeni kwezinga lokushisa, amazanga olwandle, nezinhlekelele zemvelo ezandayo.
- **Ukukhula kokungalingani** - izinzuzo zezimali zesimo sezulu zithathwa ngabacebile, kuyilapho imiphakathi ebuthakathaka ithwala umthwalo wokungcoliswa kwemvelo, ukuphucwa izinsiza kanye nokungatholi usizo - okuholela ekungazinzeni kwezepolitiki.



5. Indlela Yokubhekana Nenkohlakalo Ehlobene Nokuguquguquka Kwesimo Sezulu

Ukuqonda ukuthi inkohlakalo iyayivimba inqubekela phambili yezinhlelo zesimo sezulu kususisa thina nemiphakathi yethu ukuba sifune ukubuswa kahle nobulungiswa bezemvelo. Ngakho-ke, ukulwa nenkohlakalo ehambisana nokuguquka kwesimo sezulu kubalulekile ukuze sifinyelele ikusasa elilungile nelisimeme. Abantu bomphakathi, inhlangano zomphakathi, uhulumeni kanye nemikhakha ezimele kufanele basebenzisane ukuze:

- **Kukhuthazwe obala** ekuphathweni kwezimali zesimo sezulu kanye nasekusetshenzisweni kweprojekthi – njengezinhlelo zokutshala imali ekuguqukeni kwamandla (Just Energy Transition Investment Plan).
- **Kuqiniswe imithetho nezindlela zokuphoqelela umthetho** – kufaka phakathi uMthetho Wokuguquguquka Kwesimo Sezulu (Climate Change Act), izinqubomgomo ezihambisanayo kanye neminyango kahulumeni efanele.
- **Kuphathwe ngokubandakanya umphakathi** ezinqumweni zemvelo – njengokunikezwa kwelayisensi yezimayini, ukuze kungashiywa imiphakathi ngaphandle.
- **Kwesekwe ukuqapha okuzimele kanye nokuvikelwa kwabavuzayo** (whistle-blowers) – ukuze izenzo zenkohlakalo zivele obala ngaphandle kokwesatshiswa.

6. Kuyini Ukuhola Nokuphatha Ukuguquguquka Kwesimo Sezulu? (Climate Governance)

Ukuhola nokuphatha ukuguquka kwesimo sezulu kubhekisela emthethweni, ezinqubomgomeni, ezinhlanganweni kanye nezinqubo eziqondisa indlela uhulumeni nemiphakathi ababhekana ngayo nezingozi zesimo sezulu.

ENingizimu Afrika, ukuhola kwezemvelo kudonsa kanzima ngenxa:

- **Yokwehlukana kwezikhungo (institutional fragmentation)** - iminyango eminingi - njengeyemvelo, ezamandla, ezohwebo - inemisebenzi efanayo engahambisani, okubangela ukudideka kwezinhlelo.
- **Yokushoda kwamakhono ezikomkhulu** - amakhansela amaningi awanazo izimali noma amakhono okuqhuba izinhlelo zesimo sezulu noma ukuphendula izinhlekelele.
- **Yokungasebenzi kahle kwezinhlelo ezikhona** - nakuba kunezinqubomgomo eziqinile, ukungasebenzi kahle okuvela kumasela ezikhundleni nakushoda kwemithombo kuguqula izinhlelo zibe amaphepha nje.
- **Yokushiya kwemiphakathi ngaphandle** - imiphakathi yasemakhaya, ezindaweni ezingakahleleki nezingaphandle kwedolobha ivame ukungabandakanywa ezinhlelweni noma ekutholeni usizo.



7. Izixazululo Nokusebenzisana Komphakathi Ukuze Kube Nobulungiswa Besimo Sezulu

Ukuze kuqiniseke ukuhola okuhle kwezinguquko zesimo sezulu futhi kuthuthukiswe ubulungiswa bemvelo, izinyathelo ezilandelayo zibhekwa njengemigomo ebalulekile:

- **Ukubamba iqhaza komphakathi nokwakhiwa kolwazi:** Sekela imiphakathi ebuthakathaka - ikakhulukazi izindawo ezingakahleleki nezabalimi abancane - ukuze baqonde izingozi zesimo sezulu futhi bakwazi ukubamba iqhaza ezinqumweni. Lokhu kubandakanya ukufinyelela kulwazi, imihlangano yokwazisa, nokwakha amakhono okuzimela.
- **Ukuzivumelanisa kusukela emphakathini (Community-based adaptation):** Nikeza amandla emphakathini ukuthi uzimele ekuqhamukeni nasekusebenziseni izixazululo zesimo sezulu ezisuselwe olwazini lwakudala - njengokusebenzisa ama-agroecology, ukuqoqa amanzi (water harvesting), nokugquma umhlabathi (mulching).

- **Ukubhekana nokungaphephile kwezakhiwo zomhlaba (Insecure land tenure):** Amalungelo obunikazi bomhlaba abalulekile ekuzivikeleni kwezemvelo. Imiphakathi engenalo ilungelo lomhlaba ngokomthetho ivame ukhulukaniswa ezinhlelweni zezimali zesimo sezulu futhi ayikwazi ukutshala imali ezinqubweni ezisimeme.
- **Ukuphakanyiswa kwezinhlelo zokudla ezisezingeni lomphakathi (Localised food systems):** Buyisela isibambiso sokudla namanzi emphakathini nakwabakhi abancane. Izinhlelo zokudla zesendaweni zandisa ukuphepha kokudla futhi zakha amandla okuvumela ukuthi imiphakathi imelane nezinguquko zesimo sezulu.



8. Izinqubomgomo , imithetho neminyango ephethe isimo sezulu

1. Inqubomgomo kazwelonke yokushintsha kwesimo sezulu (NCCRP) (2011)

Inqubomgomo kazwelonke yokushintsha kwesimo sezulu iyinqubomgomo eyisisekelo, ewumhlahlandlela wokuqinisekisa ukuncipha komoya ongcolile ibe futhi igqugquzela intuthuko. Ibhekana nezinsela ezimbili. Igxila ekunciphiseni (ukwehlisa) kanye nokwamukela (yakha ukuqinisekisa). Lenqubomgomo iqukethe amasu okusebenza

kwamandla, ezolimo, namanzi ukuze kubhekwane nobungozi besimo sezulu bese kubuyelwa emnothweni ongenawo umoya ongcolile.

2. Umthethosisekelo kazwelonke wokuphathwa kwezemvelo (NEMA) (isigaba 107, sangonyaka ka- 1998 esilungisiwe)

Abezokuphathwa kwemvelo kazwelonke (NEMA) banikezela ngohlu olusemthethweni lokuvikelwa kwemvelo eNingizimu Afrika. Iqukethe ukwehlukiswa kokuqiniseka kanye nokuphathwa kwezinhlekelele, okuqinisekisa ukuthi izinqubomgomo zezemvelo zihambisana nemigomo yesimo sezulu. Lomthethosisekelo weseka intuthuko ephephile ephinde futhi ibhekane nezinkinga zomhlaba.

3. Isu lokuqiniseka likazwelonke (2020)

Lelisu ligxila ekuqiniseni kwesimo sezulu ezindaweni ezibucayi njengamanzi, ezolimo, nezempilo. Libhekana nezinkinga ezikhulayo ezifana nesomiso. Izikhukhula, nokushisa okwedlulele, lisiza iNingizimu Afrika ukuthi ikwazi ukumelana nemithelela yesimo sezulu.

4. Uhlu lokwehlukana elineqiniso

Ibhaka ushintsho olulawulekayo olusuka kumnotho oluhlaza, loluhlu luqinisekisa ukuthi abasebenzi bomkhiqizo wamalahlale nemiphakathi abasaleli emuva. Igcizelela ukuqinisekiswa kwemisebenzi, ukwehlukana komnotho nokuvikeleka komphakathi ethintekayo ngesikhathi kuhlukaniswa.

5. Umthethosisekelo wokuphathwa kwezinhlekelele (DMA) (isigaba sesi 57, sangonyaka ka- 2002)

Umthethosisekelo wokuphathwa kwezinhlekelele uwuzezu lomthetho waseNingizimu Afrika onikezela ngohlu lokuphathwa kwezinhlekelele, okubalwa izinhlekelele zendalo, izinhlekelele zobuchwepheshe, nezimo eziphuthumayo zesizwe. Wasungulewa ukuthi uqinisekise ukubhekana nezinhlekelele eminyangweni eyahlukahlukene yohulumeni.



9. Izenzo: Qinisa ubuholi besimosezulu obuneqiniso futhi obubandakanya wonke umuntu

Ukuzilungiselela izinhlekelele zesimosezulu eNingizimu Afrika kumele kuthinte abantu futhi kube nobulungiswa. Into ezisemqoka kakhulu zibala:

- **Faka imali ezenzweni zomphakathi:** Yisa izimali zesimosezulu ezimbonini ezifanele. Abalimi, kanye nezindawo zomphakathi.
- **Guqula amamodeli obunikazi bomhlaba:** Khangisa izindlela ezintsha ezigqogquzela labo ababekhishwe inyumbazana, okubalwa abesifazane nentsha.
- **Qinisekisa ukuziphendulela:** Yenza izikhulu zikahulumeni ziphendule mayelana nezinhlelo zesimo sezulu nokuthiimali izosebenza kanjani. Dalula uphinde ubenenselelo kosomabhizinisi.
- **Yeseka isayensi neqiniso:** Vula izindawo zesayensi emphakathini, uphakamise ukufundisa ngesimo sezulu abantu babenolwazi olufanele.
- **Khulisa ukwehlukana okuyiqiniso okungezansi:** Yakha amathuba emisebenzi emiphakathini.

10 . Ukubika inkohlakalo yezesimo sezulu nezinkinga zokuphathwa kwaso

1. Abezophenyo abakhethekileyo (SIU)

- **Indima:** Baphenya inkohlakalo, ukwenziwa kwamaphepha okungekho semthethweni kanye nezikhungo zesizwe ezininkohlakalo.
- **Ubumqoka besimo sezulu:** Bangadalula ukuxhaphazwa kwemali yesimo sezulu (isibonelo ukukhwebanisa amadla abuyiselekeyo , nenkohlakalo yokubhekana nomoya ongcolile)
- **Zibikwa kephi nakanjani izenzo zenkohlakalo ezibhekene nesimo sezulu:**

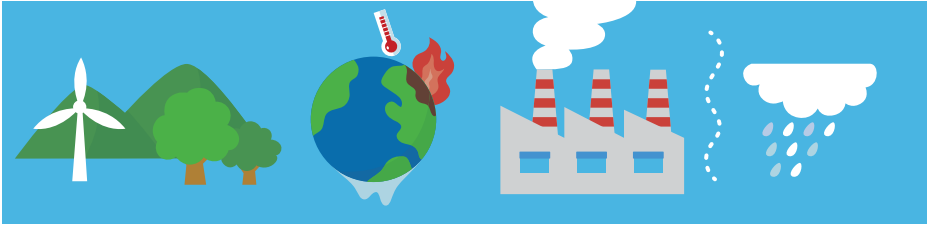
o Ku-inthanethi: www.siu.org.za

o Inombolo yocingo esheshayo: 0800 037 774

o Kwimeyili: siu@siu.org.za

2. Abavikeli bomphakathi (PPSA)

- **Indima:** Bapheya ukusebenza kohulumeni.
- **Ubumqoka besimo sezulu:** Babhekana nezikhalazo zokuxhashazwa kwemali yesimo sezulu noma ukuxhashazwa kwemthethosisekelo.
- **Ubika kanjani:**
 - o Ku- inthanethi: www.pprotect.org
 - o Inombolo yocingo esheshayo: 0800 112 040
 - o Ubuso nobuso: Vakashela amahhovisi omkhandlu



3. Abofezela abaluhlaza (Abaqaphi bokuphathwa kwezemvelo)

- **Indima:** Baqinisekisa imithetho yezemvelo okubalwa nokuxhashazwa ezinkingeni zesimo sezulu.
- **Ubumqoka besimo sezulu:** Baphenya amaprojekthi angekho semthethweni okukhiqizwa komoya, inkohlakalo engcolisa umoya noma umgunyathi wokwenza umhlaba oluhlaza.
- **Ubika kanjani:**
 - o Inombolo yocingo esheshayo: 0800 205 005 (DEFF Hotline)
 - o Imeyili: environmentalcomplaints@dffe.gov.za



4. Isigungu sobuhlakani sezezimali (FIC)

- **Indima:** Ibheka ukugezwa kwemali yenkohlakalo nokuphuma kwezimali okusolisayo.
- **Ubumqoka besimo sezulu:** Sibika ukuphuma kwemali okusolisayo emkhakheni wekhabhoni noma izimali sezimo sezulu.
- **Ubika kanjani:**
 - o Ku- inthanethi: www.fic.gov.za

5. Abaqaphi benkohlakalo

- **Indima:** Isigungu esizimele esidalula inkohlakalo
- **Ubumqoka besimo sezulu:** Uma ufuna ukungenelela umkhakha wezokuphathwa kwesimo sezulu nezinkinga zenkohlakalo vakashela ku-www.corruptionwatch.org.za.
- **Ubika kanjani:**
 - o Ku-inthanethi: www.corruptionwatch.org.za
 - o Kwinkundla yokuxhumana: 082 579 5220



6. Abezokuqapha umphakathi eNingizimu Afrika (SAPS) – Isikhungo samacala endawo

- **Indima:** Baphenya inkohlakalo yezezimali, okubala namaprojekthi esimo sezulu angekho semthethweni.
- **Ubika kanjani:**
 - o Vakashela: Isiteshi samaphoyisa sasendaweni (ucele abezomkhakha wamacala endawo).
 - o Inombolo yocingo esheshayo: 0860 010 111

7. Unobhala waseNingizimu Afrika (AGSA)

- **Indima:** Uhlolisisa ukusebenza kwezimali emphakathini okubalwa ukunikezelwa kwezimali zesimo sezulu.
- **Ubumqoka besimo sezulu:** Idalula ukungasetshenziswa ngendlela kwezimali zesimo sezulu.
- **Ubika kanjani:**
 - o Imeyili: agsa@agsa.co.za
 - o Inombolo yocingo: 012 426 8000

11. Umfanekiso Wezigameko

Ukugwazela nokuphoqa :

UKarl wayefuna ukwakha isitolo esincane ekhaya lakhe eGoli ukuze enze imali evela kubafundi besikole esiseduze. Umsakazo wakhe uLindiwe wayengavumelani nalolu hlelo, esaba ukuthi luzoetha umsindo, udoti, kanye nokugcwala kwezimoto emgwaqeni wabo othule futhi oluhlaza. Lapho uKarl eqaphela ukuthi imithetho yendawo kanye nezikhalazo zomphakathi zingavimba uhlelo lwakhe, wakhugqezela isikhulu sedolobha ngo-R5 000 ukuze livumele uhlelo ngokungekho emthethweni.

Lesi sikhulu sashiya eceleni imithetho yokuvikela imvelo nomphakathi. Ngenxa yalokho, ukwakhiwa kwaqala ngokushesha ngaphandle kokubonisana nomphakathi noma ukuhlolwa kwemvelo. Loluhlelo lwonakalisa izitshalo zasendaweni, lwandulela ukugcwala kwezimoto futhi lwandise udoti lwepulasitiki endaweni. Abakhelwane bathukuthele, futhi ukuthula nokuhlazeka komgwaqo kwalahleka.

Ukungahambisani nemithetho yokuthengweni kwezimpahla :

Kukhishwe isimemezelo sikahulumeni sokuguqula ingxenye yendawo engenalutho ibe ipaki yomphakathi yezingane zomphakathi wendawo. Izinkampani eziningana zahambisa iziphakamiso, kufaka phakathi izinhlelo ezizinzile nezishibhile ezigxile ezindaweni eziluhlaza nasekuzijabuliseni komphakathi. Kodwa-ke, i-On Par Consulting yagwazela isikhulu somnyango ngo-10% ukuze lithinte inqubo yokuncintisana likwenze kube ngokuthile okuthandwa yinkampani.

Ngokubuyisela, lesi sikhulu sangcolisa iziphakamiso ezinamandla futhi sakwehlisa ukubaluleka kokuhlolwa kwemithethelela yemvelo. Ngenxa yalokho, i-On Par yathola inkontileka ngesiphakamiso sokwakha inkundla ye-golf edinga amanzi amaningi esikhundleni sepaki yomphakathi.

Lesi sinqumo sashiya eceleni izidingo zomphakathi futhi sashiya ngaphandle ukuhlolwa kwemvelo. Loluhlelo lwaholela ekusetshenzisweni kwamanzi ngokweqile, ukulahleka kwezitshalo zemvelo, nokuncipha kokufinyelela ezindaweni eziluhlaza, okwephula izinhloso zomphakathi nemvelo.

Ukweba Izinsiza :

Esifundeni esibhekene nesomiso eNtshonalanga Kapa, umnikelo kaR1 billion kaHulumeni wanikezelwa ukuthuthukisa izinhlelo zamanzi ezimelana nesomiso nokweseka amaqembu okubambisana kwezolimo azinze ekulweni nesomiso emphakathini yasemakhaya ebuthakathaka. Lezi zinhlelo bezihloselwe ukusiza abantu bendawo ukubhekana nesomiso esibuhlungu nokwehluleka kwemikhiqizo.

Kunalokho, uMongameli wesifundazwe wadlulisela le mali ezinhlanganweni ezingekho emthethweni ezazingamaphupho. Imali yasetshenziswa ukuthenga izimoto ezisezingeni eliphezulu, ukuxhasa ama- akhawunti asebhange angaphandle, nokwakha iphakathi lemveni yangasese. Ukuze kufihlwe ubugebengu, ihhovisi likamengameli lathumela imibiko yamanga yokuthi izinhlelo ziqediwe ngempumelelo.

Okwamanje, imiphakathi yahlala ingenamali yokwesekwa. Abantu basezigodini baqhubekabethembele emithonjeni yamanzi engcolile neyinciphayo, izitshalo zabo zahluleka, kanti usizo olwaluthembisiwe alufikanga - ngenkathi imali ebiwe isetshenziswa ngenjongo yomuntu siqu.

Ukuphangwa komthetho kanye nokwezopolitiki ngokungemthetho :

UMengameli we-Eastern Cape, ecindezelwe yinkampani yangasese yamandla, wavuma iphrojekthi yokudlulisa igesi ngokungekho emthethweni naphezu kokuthi ingalimaza izindawo zemvelo. Enganaki imithetho yemvelo, uMengameli wamukela izipho zokugwazela, kufaka phakathi izipho ezibizayo nokukhokhelwa ngaphandle kwesizinda, esikhundleni sokushukumisa iphrojekthi. Waphinda wakhokhela iziteshi zezindaba ukuze zinciphise izingozi emithonjeni yamanzi nasemhlabeni wamaSizwe asekhaya futhi wasebenzisa amandla akhe ukuvala noma yiziphi izimpendulo ngokugwazela amalungu omthetho.

Lapho abavikeli bendawo bephikisa, uMengameli wasebenzisa amapolisa ukuthulisa ukuphikisa. Njengoba umugqa wegasi waqala ukusebenza, wacwila imithombo yamanzi waphula amalungelo omhlaba, wenza inzuzo kokubili enkampanini yamandla nasemengameleni. Umphakathi, ubona ngokusobala ukungathembeki kwamandla, walahlekelwa ukuzethemba kuhulumeni njengoba izinqubo zokulawula zaziphukile ngenhloso yokuzuza kwezinkampani.

Ukuzihlanza Ngobuxoki Ngokwemvelo (Greenwashing):

Inkampani enkulu yaqalisa umkhankaso wokukhangisa ophikisayo ithi iyinkokheli kwezokuphehla amandla avuselelekayo nokuzinza eNingizimu Afrika. Le nkampani yakhuthaza umkhankaso “oluhlaza” omusha, igxeka izinqubo zokukhiqiza ezingakhiqizi amagesi abamba ukushisa nokuhlela ukwakha imikhiqizo ehambisana nemvelo ezonciphisa ukukhishwa kwamagesi emhlabeni jikelele. Bathole izigidi zemali yezibonelelo zikahulumeni futhi bathola abatshalizimali abakhathalela imvelo.

Nokho, uma kuhlolisiswa ngokujulile, kwatholakala ukuthi imikhiqizo yale nkampani ayizinzile njengoba ibikhangisiwe. Inkampani yenza izinguquko ezincane kakhulu ezinqubweni zayo, ngenkathi iyaqhubeka nokusebenzisa uwoyela nemikhiqizo yamafutha njengamandla ayo amakhulu. Imikhiqizo yabo “eluhlaza” yayikhiqizwa kusetshenziswa amakhemikhali ayingozi, futhi izinhlelo zokunciphisa ukukhishwa kwamagesi abazithembisile zazingenziwanga. Inkampani yenza kancane noma ayenzi nhlobo intuthuko yokwehlisa umthelela wemvelo kodwa yaqhubeka nokusebenzisa amanga ayo ukuthola izibonelelo nokuthuthukisa isithombe sayo emphakathini.



Ngesikhathi esifanayo, imizamo yangempela yokulwa nezinguquko zesimo sezulu eyayizoba nomthelela omkhulu yayinganikwa uxhaso, njengoba izimali zomphakathi nezangasese zayiswa kule nkampani engekho emthethweni “oluhlaza.” Abathengi nabatshalizimali bahlukumezekile, kanti inkampani yaqhubeka nokuzuza ngamagama ayo amanga.



corruption
watch



www.corruptionwatch.org.za

